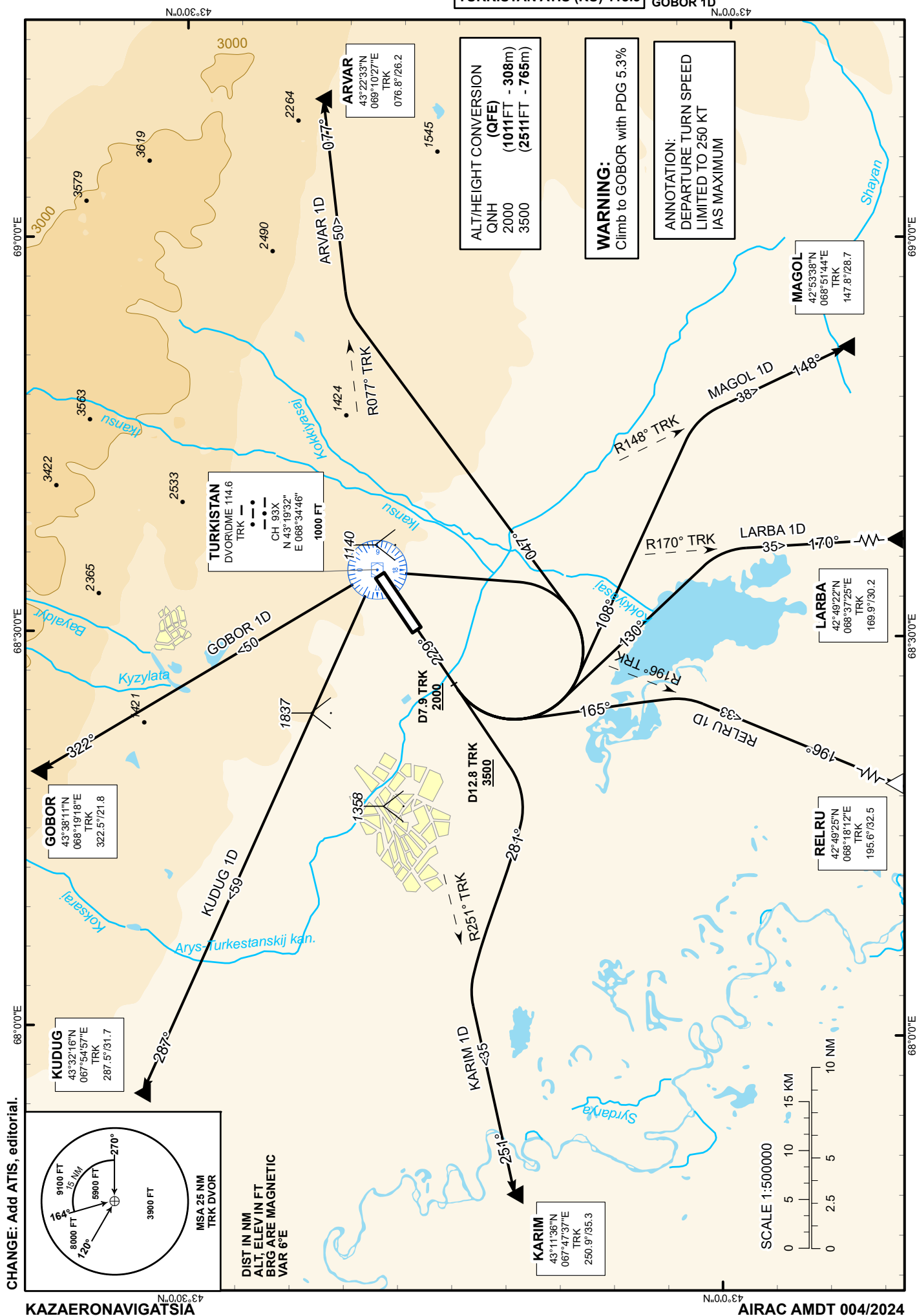


TRANSITION ALTITUDE
10000 FT

TURKISTAN TOWER	131.3
TURKISTAN ATIS (EN)	124.4
TURKISTAN ATIS (RU)	118.3

ARVAR 1D, MAGOL 1D,
LARBA 1D, RELRU 1D,
KARIM 1D, KUDUG 1D,
GOBOR 1D

**TURKISTAN
RWY 23**



STANDARD DEPARTURE ROUTES – INSTRUMENT (SID) TURKISTAN RWY 23

ARVAR 1D

After take-off climb straight ahead to 2000 or above, at 7.9 NM TRK turn LEFT on track 047° until intercept R077° TRK, proceed to
ARVAR R076.8°, D26.2 TRK.
Cross ARVAR at 7000 or above.

MAGOL 1D

After take-off climb straight ahead to 2000 or above, at 7.9 NM TRK turn LEFT on track 108° until intercept R148° TRK, proceed to
MAGOL R147.8°, D28.7 TRK.
Cross MAGOL at 7000 or above.

LARBA 1D

After take-off climb straight ahead to 2000 or above, at 7.9 NM TRK turn LEFT on track 130° until intercept R170° TRK, proceed to
LARBA R169.9°, D30.2 TRK.
Cross LARBA at 7000 or above.

RELRU 1D

After take-off climb straight ahead to 2000 or above, at 7.9 NM TRK turn LEFT on track 165° until intercept R196° TRK, proceed to
RELRU R195.6°, D32.5 TRK.
Cross RELRU at 7000 or above.

KARIM 1D

After take-off climb straight ahead to 3500 or above, at 12.8 NM TRK turn RIGHT on track 281° until intercept R251° TRK, proceed to
KARIM R250.9°, D35.3 TRK.
Cross KARIM at 7000 or above.

KUDUG 1D

After take-off climb straight ahead to 2000 or above, at 7.9 NM TRK turn LEFT to TRK, after crossing TRK proceed on track 287° to
KUDUG R287.5°, D31.7 TRK.
Cross KUDUG at 7000 or above.

GOBOR 1D

After take-off climb straight ahead to 2000 or above, at 7.9 NM TRK turn LEFT to TRK, after crossing TRK proceed on track 322° to
GOBOR R322.5°, D21.8 TRK.
Cross GOBOR at 9000 or above.